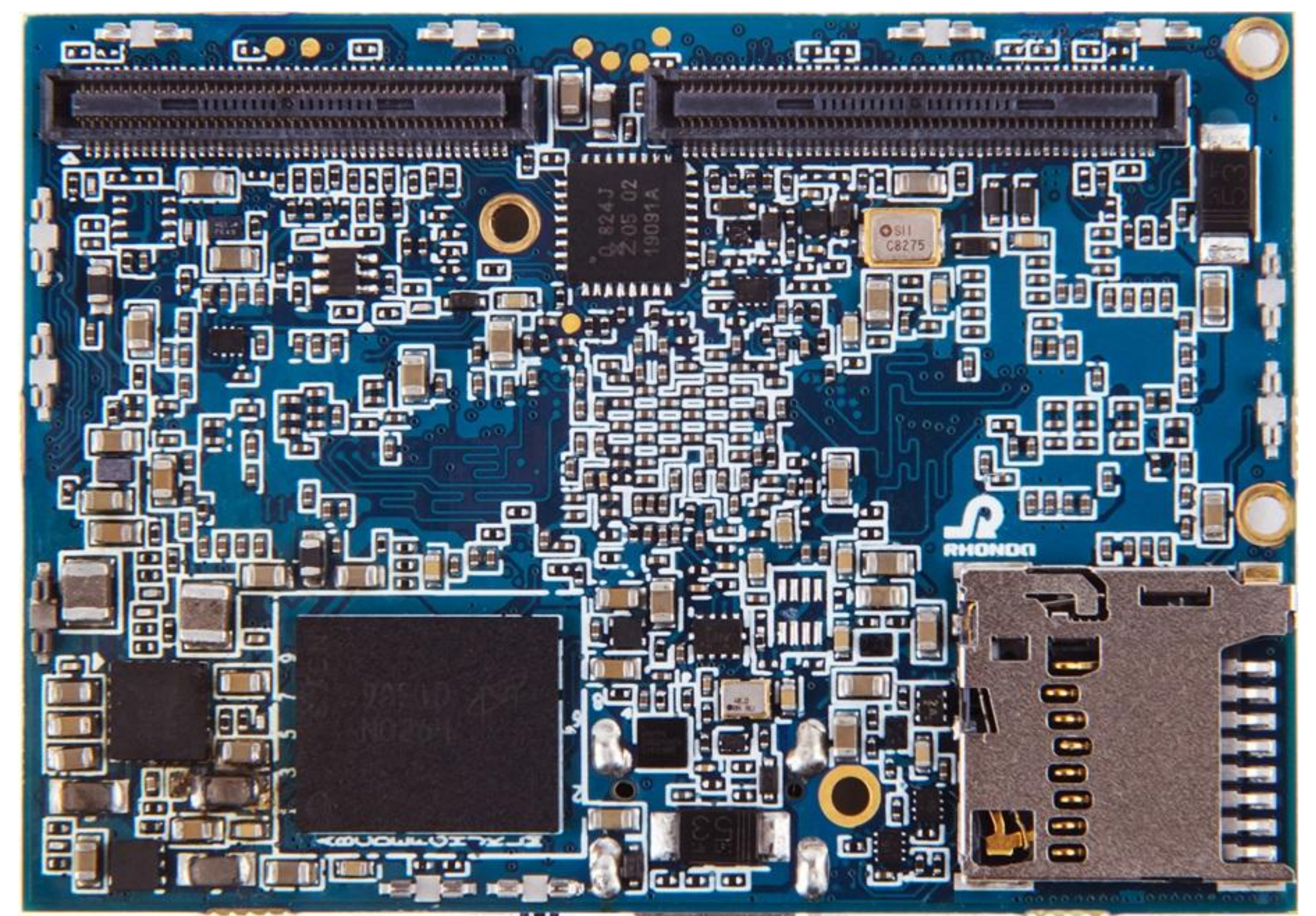
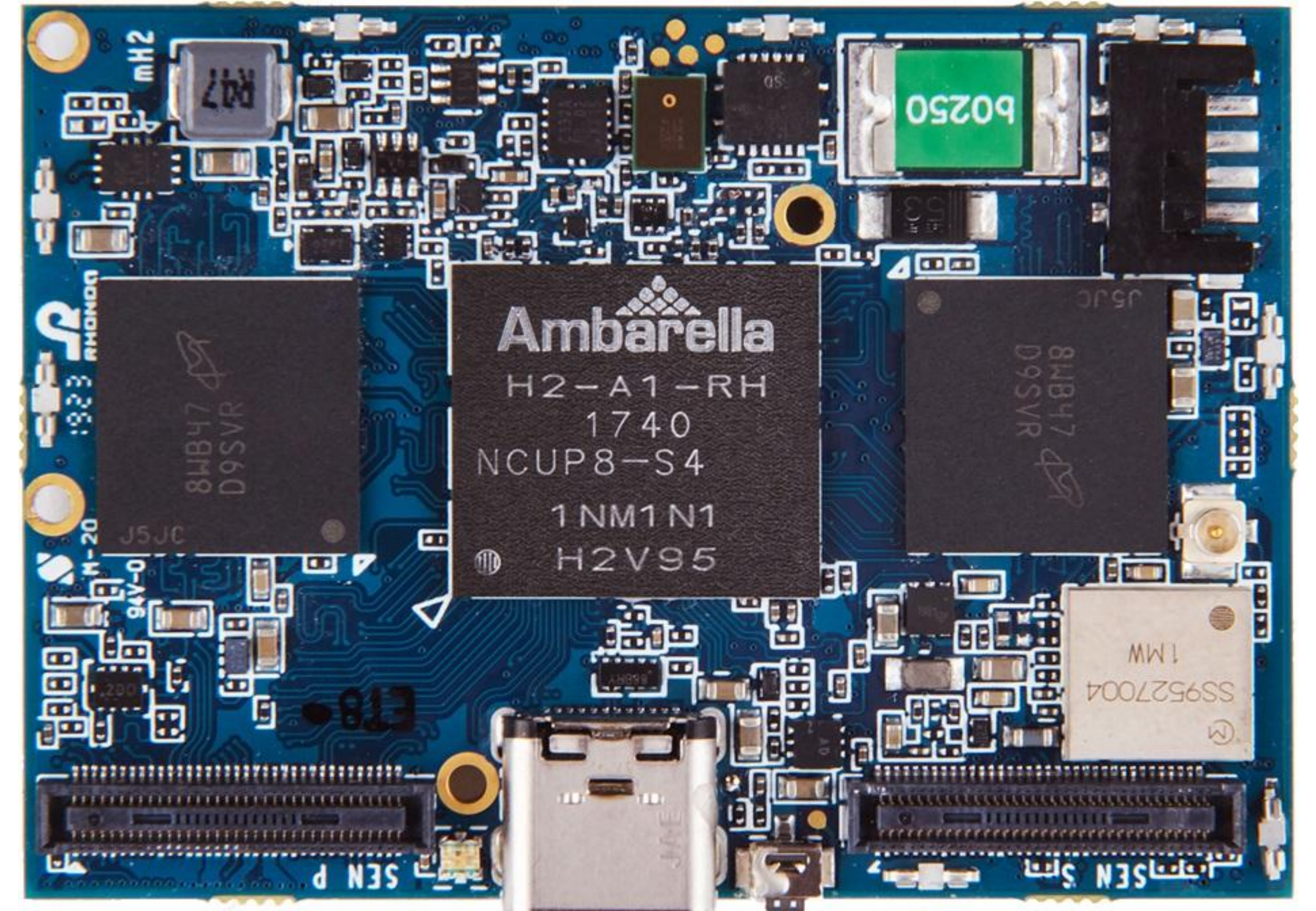


H2 System On Module

Overview

H2 System On Module (H2 SoM) is a hardware platform for consumer and professional imaging products. H2 SoM is based on Ambarella® H2V95™ SoC. H2 SoM contains a main board and a set of daughter boards, allowing flexible functionality.

H2 SoM is low-power, ready-to-integrate and production ready for rapid prototyping, quick development and the production of robots, drones, or other applications.



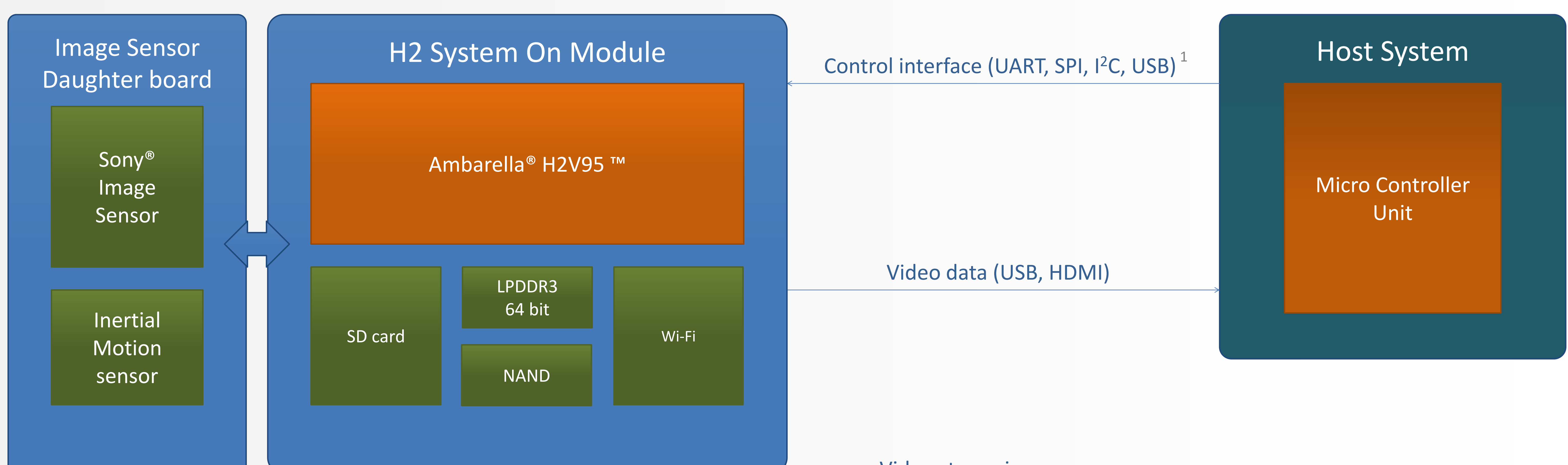
Default package size is 54 x 38 mm

Key Features

- 4Kp60 H.265 video recording
- Superior image quality of Sony® Exmor R™ image sensor
- Wi-Fi streaming
- USB streaming
- Inertial Motion sensor
- SD card
- USB Host for 4G Mobile connectivity

Block Diagram

The diagram below illustrates H2 System On Module interaction with Host System



Video streaming



¹ Control interface is optional, H2 System On Module may function without Host system control if configured properly

General Specification

- Ambarella® H2V95™ SoC
- Multi image sensor support:
 - - Primary sensor: SLVC-EC 8-lane, MIPI CSI-2 8-lane or SLVS 12-lane
 - - Secondary sensor (up to 3) : MIPI CSI-2 4-lane or SLVS 4-lane
 - - 16 lanes total (e.g. use with 4 sensors, 4 lanes input each)
- 16Gb LPDDR3 DRAM
- 2Gb internal NAND storage
- Wi-Fi (802.11a/b/g/n/ac)
- Sony® 12.35Mpx (Type 1/2.3") image sensor with tuned image quality²
- Optical lens DFOV 165°, physical dimensions 23 mm (length) x 18 mm (diameter)²
- Power input: 5V from USB or 3.5-5V from board-to-board connector
- Li-ion battery support²
- On-board mono digital microphone
- Speaker and stereo analog microphones support²
- SD card support²
- 3-axis accelerometer, 3-axis gyroscope, 3-axis magnetometer²
- GNSS²
- Interfaces:
 - Gigabit RGMII
 - HDMI® 2.0
 - USB 2.0 DEVICE
 - USB 2.0 HOST
 - 8-bit parallel video output interface for LCD
 - I²S
 - Wide range of peripheral interfaces (UART x3, I²C x2, SPI, ADC x2, GPIOs)
- Operating temperature -20°C to 75°C³
- Main board physical dimensions 54 x 38 mm

² Available on daughter boards

³ Temperature range of main board; daughter boards temperature range may be different

Development platform

H2 System On Module is a HW platform for integration with Host systems. H2 SoM provides interfaces for:

- Control (UART, SPI, I²C, USB)
- Video streaming (USB, HDMI, Wi-Fi)

H2 System On Module has several working configurations, the startup configuration is flexible and can be easily changed.

To speed up product development, H2 System On Module is provided with:

- Reference application for integration with Host system
- Configuration file for H2 System On Module control (settings changing, quick feature testing)
- Detailed documentation including reference board pinout, HW guide, application notes.

Copyright Rhonda Software LLC. All rights reserved. Rhonda Software, and the Rhonda Software logo are trademarks of Rhonda Software LLC. All other brands, product names and company names are trademarks of their respective owners. The information in this document is believed to be reliable, but may project preliminary functionality not yet available. Rhonda Software LLC makes no guarantee or warranty concerning the accuracy and availability of said information and shall not be responsible for any loss or damage whatever nature resulting from the use of, or reliance upon it. Rhonda Software LLC does not guarantee that the use of any information contained herein will not infringe upon patent, trademark, copyright, or other rights of third parties. Rhonda Software LLC reserves the right to make changes in the product and /or its specifications presented in this publication at any time without notice.